



1514 SORRENTO DRIVE

Pacific Palisades





Price Upon Request

5 BEDS | 4.5 BATHS | 5,500 SQ. FT. | 17,060 SQ. FT. LOT

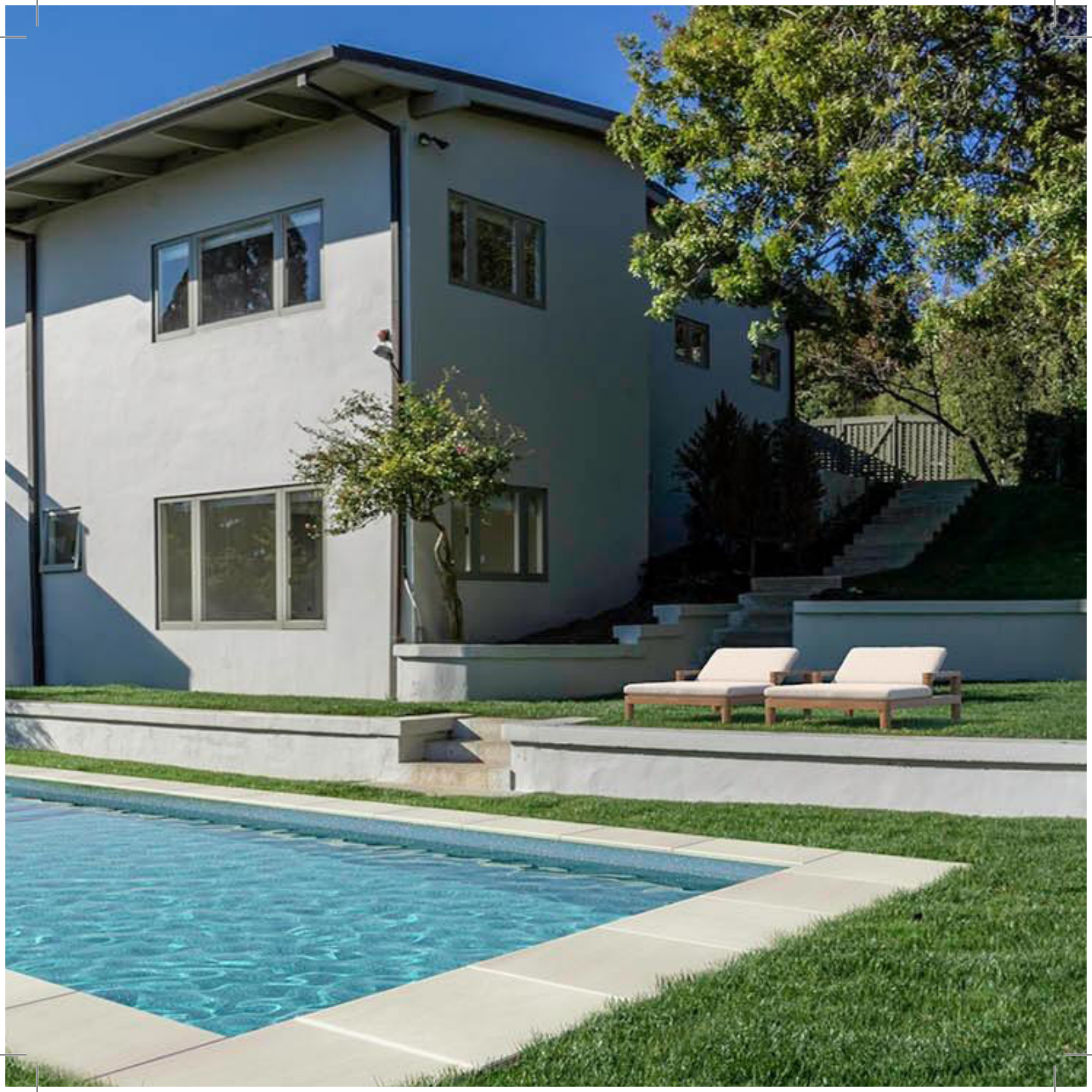
Nestled into a serene landscape, overlooking the Riviera with effortless elegance in the beautiful Pacific Palisades. This midcentury, modern home with 5 beds, 4.5 baths and a detached guest house is perfect for entertaining. Upon entering, you are greeted by an open floor plan and a living area with vaulted ceilings and exposed beams. Ocean views highlight the California lifestyle with indoor-outdoor living in this home.







Rendering



Santiago Arana

SANTIAGO@THEAGENCYRE.COM
310.926.9808 | LIC. #01492489

Zac Mostame

ZAC.MOSTAME@THEAGENCYRE.COM
424.527.8889 | LIC. #02110196

THEAGENCYRE.COM
11777 SAN VICENTE BLVD., SUITE 850 | LOS ANGELES, CA 90049